

Our staff consists of a team of licensed psychologists, licensed professional counselors, certified rehabilitation counselors, certified school psychologists and highly trained and specialized diagnosticians, each possessing a wide range of specializations and experience. Each of our services are individually tailored to meet your specific needs.

Individual Therapy  
Child Therapy  
Couples Therapy  
Distance Counseling "Teletherapy"  
Biofeedback & Neurofeedback  
Prescription Medication Consultations  
Psychological Testing/ Evaluations  
Psycho-educational Testing  
Learning Performance Clinic  
Career and Life Coaching

**We are easily accessible via  
MARTA and Cobb County Transit  
(CCT). Free parking always  
available**

### **Intown Psychological Assoc., LLC**

501 Pulliam Street | Suite 407  
Atlanta, GA 30312  
O (404) 474 7021  
F (404) 592 4698

45 South Ave | Suite 100  
Marietta, GA 30060  
O (770) 423 7500  
F (678) 909 0294

[www.intownpsych.com](http://www.intownpsych.com)



Intown Psychological Assoc., LLC  
Downtown Atlanta & Marietta  
[www.intownpsych.com](http://www.intownpsych.com)



Psychological Testing/ Evaluations  
Psycho-educational Testing



## Psychological Testing/ Evaluations

### Psycho-educational Testing (Pre-K, Elementary, Secondary, College, Graduate School)



### Psychological Testing/ Evaluations

Many factors are taken into consideration when determining what type of testing is required. The type of evaluation will determine the time required for the evaluation, as well as the cost. In some cases, testing requires two separate visits to our office. Testing usually begins with a diagnostic interview, when our clinician will attempt to get a detailed personal history, with an emphasis on whatever prompted testing. Depending on the presenting problem(s), you will likely be asked to fill out several questionnaires and when necessary, prior records (report cards, IEP records, previous psychological evaluation, and medical records) may be reviewed.

Once the results are interpreted, you will return to the office to discuss the findings and a written report will be provided with a diagnosis and recommendations, if applicable.

- Personality Issues
- Emotional Problems
- Parental Fitness Evaluations
- Competency
- Psycho-Educational
- Diagnostic Clarification
- Pre-bariatric Surgery Evaluations
- Independent Consultative Evaluations for Social Security, Veteran's Administration-Service Connected Disability, Worker's Compensation, Vocational Rehabilitation



### Psycho-Educational Testing

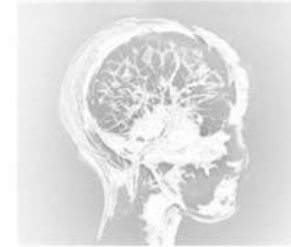
(Pre-K, Elementary, Secondary, College,  
Graduate School)

Students are often tested to determine whether an individual has a learning disability, emotional-behavioral problem, and/or attention deficit hyperactivity disorder (ADHD), that may be interfering with their success at school. Many students are mistakenly labeled as "lazy" without a full understanding that their problem is likely related to a small area of difficulty. Testing can provide specific information about problem-areas, as well as areas of strength. Once specific problem areas are identified, compensatory strategies can be employed, while capitalizing on strengths. Also, our written evaluation will be useful at school. Teachers can use our information to provide appropriate classroom modifications including how they present material in class, how and where they test their students and what types of homework assignments maximize effective learning.

- Psycho-educational testing can provide evidence needed to support the need for special test accommodations, especially when students are preparing to take college entrance exams. (MCAT, LSAT, GRE).
- Test results provide evidence needed to support special needs eligibility in the public school system.

[www.intownpsych.com](http://www.intownpsych.com)

We presently work with individuals and families in the greater Atlanta area. We also work with a number of community mental health agencies, including several CORE/IFI providers, the Georgia Department of Labor (Disability Adjudication Services and Vocational Rehabilitation Services) and the Department of Family and Children's Services in various roles.



### Scheduling & Payment

We can usually schedule an appointment within one week of your inquiry, sometimes sooner. For those wishing to use insurance, our office manager can check with your insurance provider to see how much of testing will be covered. We currently accept BC/BS, Aetna, Medicaid, Medicare and Tricare. If we don't presently accept your insurance, you may be eligible to use your "out of network." If you do not have insurance and wish to self-pay, please inquire about our self-pay options. Generally, 50% is due at the initial appointment and the final balance is due at the results session.

To schedule your first appointment, called an initial diagnostic interview, call our office or visit our website.

**Ask about the Learning  
Performance Clinic at  
Intown Psychological  
Associates!**

